



TREASURES FROM LOCAL ANTIQUES SHOPS DECORATE LILY ALDRIDGE AND CALEB FOLLOWILL'S NASHVILLE HOME, DESIGNED BY PIERCE & WARD. IN THE LIVING ROOM, ZODIAC PENDANT BY VISUAL COMFORT. FOR DETAILS SEE RESOURCES.



S

SOUTHERN CHARM

An eclectic
Nashville home
sets the stage for
model *Lily Aldridge*
and rocker
Caleb Followill's
idyllic family life

TEXT BY **JANE KELTNER DE VALLE**
PHOTOGRAPHY BY **LESLEE MITCHELL**
STYLED BY **JESSICA SAILER VAN LITH**

PERCHED ON A 19TH-CENTURY SPANISH CHAIR, ALDRIDGE WEARS A CHLOÉ DRESS AND BULGARI RING. OPPOSITE, FROM TOP ARMCHAIRS BY RH BASK IN THE SUNROOM; VINTAGE RUSSELL WOODARD COCKTAIL TABLE. VINTAGE ART IS A LEITMOTIF.

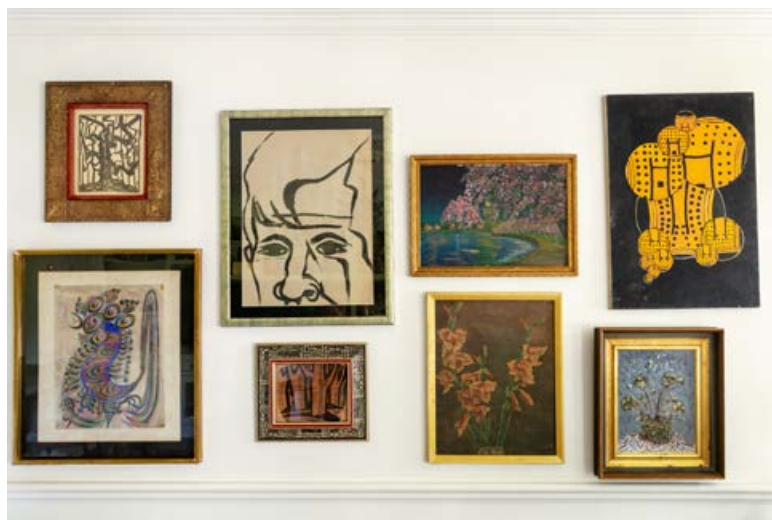


if

you happen to be driving through Nashville in December and see a stately brick Tudor Revival house spectacularly ablaze with holiday lights, you just might have hit on the dwelling of Lily Aldridge and Caleb Followill. While she is admittedly better known as a Victoria's Secret bombshell and face of Bulgari than an overzealous homemaker, and her other half as the lead singer of rock band Kings of Leon, the couple, parents to six-year-old daughter Dixie, enthusiastically put family life center stage when they're off duty. "Caleb jokes that it feels like the Griswold house," Aldridge says with a laugh of her self-proclaimed "mini Christmas village."

When it comes to model-rocker unions, domesticity is a somewhat foreign concept. Studio 54 set the stage for Mick Jagger and Jerry Hall's glamorous courtship. Axl Rose and Stephanie Seymour's volatile romance played out in a series of music videos that ended with her in a coffin (not surprisingly, their unscripted relationship fizzled in almost as dramatic a fashion). But for Aldridge and Followill, who rarely make public appearances à deux, the theatrics appear to be reserved for their charming abode, composed of grand archways, Persian carpets, and a gloriously tiled kitchen. "Home is everything," says the California native, who relocated to Nashville after meeting her Tennessee-born husband more than a decade ago. "We both travel a lot for work, but we do everything in our power to go in and out as fast as possible so we can have a normal life here."

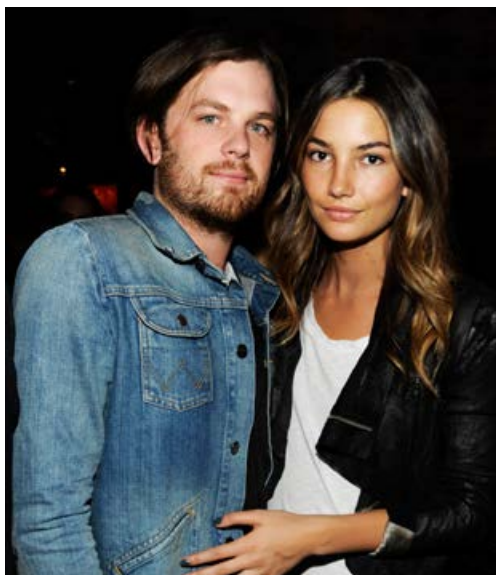
Dixie's birth sparked the couple's move from a kicky condo located near the city's nightlife scene and sports arena to "a home near a great school," Aldridge says of how their priorities shifted upon becoming parents. She immediately fell in love with this one: "It was beautiful, comfy, cozy." She pauses. "My husband, on the other hand, wanted to move into a different house." To help persuade him that the Tudor Revival, though a bit old-fashioned in appearance, was the perfect address, she called on designers and close friends Louisa Pierce and Emily Ward of Pierce & Ward. The duo count Karen Elson, Leonardo DiCaprio, and Dakota Johnson among their starry clientele, and Pierce had previously decorated Aldridge and Followill's condo. →





CLOCKWISE FROM ABOVE THE POWDER ROOM FEATURES GLOBAL DECOR: MOROCCAN SINK WITH VINTAGE BRASS FITTINGS; 19TH-CENTURY FRENCH SCONCE; ANTIQUE SWEDISH MIRROR AND

MOROCCAN STOOL. ALDRIDGE AND FOLLOWILL. DAUGHTER DIXIE, IN YELLOWPELOTA PAJAMAS FROM MAISONETTE, JUMPS ON HER BED. CANOPY BY RH BABY & CHILD; ANTIQUE STUFFED BUNNY; 1970s RUG.



A recognition of the 1930 house's good bones helped seal the deal: wood floors, beamed ceilings, expansive windows. "I love those details, and they're hard to re-create," Aldridge explains. Her husband gave in, and in the span of just four months, during much of which Followill was on tour and Aldridge out of town on modeling assignments, Pierce and Ward renovated and decorated every square inch of the place. "When it was finished," says Pierce, "we lit candles, put flowers everywhere, and practically pulled out as they were pulling in." Three years later, Ward adds, "they haven't changed a thing."

For the decor, Aldridge presented the designers with a Pinterest board of inspirations ranging from romantic English country houses to exotic Moroccan *riads*. "We were all on the same page," says Ward, who, with Pierce, cheerfully scavenged antiques stores and eBay for eclectica such as leather club chairs, poufs, chandeliers, and a *mélange* of midcentury-

BELOW A SHIRAZ CARPET LEADS TO THE MASTER BATH'S SIGNATURE HARDWARE CLAW-FOOT TUB; A MOORISH INCENSE BURNER WAS REPURPOSED AS A PENDANT.

RIGHT BOLD PATTERNS JAZZ UP THE MASTER BEDROOM. CUSTOM HEADBOARD; ANTIQUE PENDANT AND HAND-PAINTED CHINESE LAMP. SLIPPERS BY THE ROW.



modern pieces. “They’ve definitely taught me that it’s important to mix,” Aldridge declares. “Before, I would go into a sales gallery and be like, Yes, yes, yes. Then I’d get home and realize, Wow, my house looks like a showroom.”

Each room is imbued with a relaxed, family-friendly elegance. The kitchen features open cabinetry with a decorative retro tile backsplash, and it’s where Followill holds court. “He has said that if he weren’t a singer he would have been a chef,” Aldridge notes. She describes the dining room as “gorgeous,” then admits, “I don’t think we’ve ever had one dinner in there.” Instead, the airy breakfast room is where the family takes most meals: “Nothing is ever super-duper formal,” the model explains. The living room is framed in arched bookshelves with a fireplace she

“We both travel a lot for work,” Aldridge says, “but we do everything in our power to have a normal life here.”

keeps crackling “until it’s unbearably hot outside” and a pair of club chairs that remind her of the ones her artist father had in his studio during her youth. “The leather was literally peeling off the seats,” she recalls.

“My childhood home was inviting and comfortable,” the model continues. “It was a house where everyone was welcome, my family was always cooking and entertaining, nothing was too precious.” They are traditions Aldridge and her husband happily carry on today. “I love hosting playdates and having people over,” she says. “It’s an important part of keeping a house feeling alive.” ▲



“Nothing is ever
super-duper formal,”
Aldridge says of her
Nashville lifestyle.

ALDRIDGE, IN AN ATTICO DRESS, BULGARI JEWELRY, AND TABITHA SIMMONS SANDALS, AND TABITHA SIMMONS SANDALS, AND DIXIE, IN A CARAMEL DRESS FROM MAISONETTE, HAVE A TEA PARTY. OPPOSITE CUSTOM TILEWORK LINES THE KITCHEN WALLS AND WOLF HOOD. VINTAGE PENDANT; ANTIQUE MIRROR; WOLF RANGE.



★ EXCLUSIVE VIDEO LILY ALDRIDGE AT HOME, ARCHDIGEST.COM.